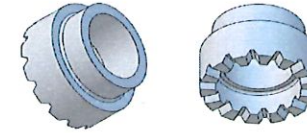
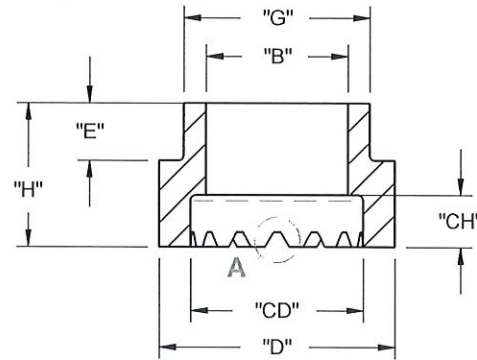
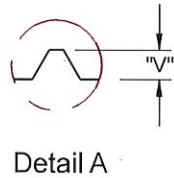


Rev	Date	Description



NOM SIZE	"B" ^{+0.015} / _{-0.000}	"G" ±0.010	"D" ±0.015	"H" ±0.015	"E" ±0.015	"CD" ^{+0.015} / _{-0.000}	"CH" ^{+0.015} / _{-0.000}	VENTS	"V" ^{+0.015} / _{-0.000}	DU - CO PART NO.
8	.155	.305	.390	.390	.156	.190	.070	8	.030	AF-2871
10	.154	.281	.375	.390	.156	.203	.078	8	.031	AF-2655
3/16	.192	.305	.390	.390	.156	.262	.110	8	.040	AF-1419
1/4	.255	.380	.455	.390	.125	.330	.125	8	.040	AF-1565-2
5/16	.317	.445	.578	.390	.156	.406	.125	12	.040	AF-1421
3/8	.385	.505	.640	.390	.156	.468	.141	14	.040	AF-1313
7/16	.442	.585	.703	.422	.188	.546	.156	16	.040	AF-1422
1/2	.505	.650	.795	.438	.188	.603	.172	18	.045	AF-1402
5/8	.635	.785	1.030 / 1.050	.516	.188	.745	.250	18	.055	AF-1260
3/4 *	.800	1.030	1.225 / 1.249	.656	.188	.937 / .957	.315	18	.080	AF-0837
7/8 *	.906	1.210	1.415 / 1.445	.732	.188	1.042 / 1.062	.390	20	.080	AF-1132
1.00 *	1.030	1.406	1.620	.820	.188	1.215	.390	22	.085	AF-1978

NOTE:
* TOLERANCE ±1.5% UNLESS NOTED

TOLERANCES UNLESS OTHERWISE SPECIFIED
±1% OR ±0.010" WHICHEVER IS GREATER
ANGLES ±2.0°
FRACTIONS ±1/64"

* DO NOT SCALE DRAWINGS*



DRAWN RLH DATE 3/4/2021

DESIGNED SCALE NONE

MATERIAL: CORDIERITE

TITLE: TYPE "F" FERRULES

SIZE: A

Du-Co PART OR QUOTE NUMBER 012882

REV NULL*